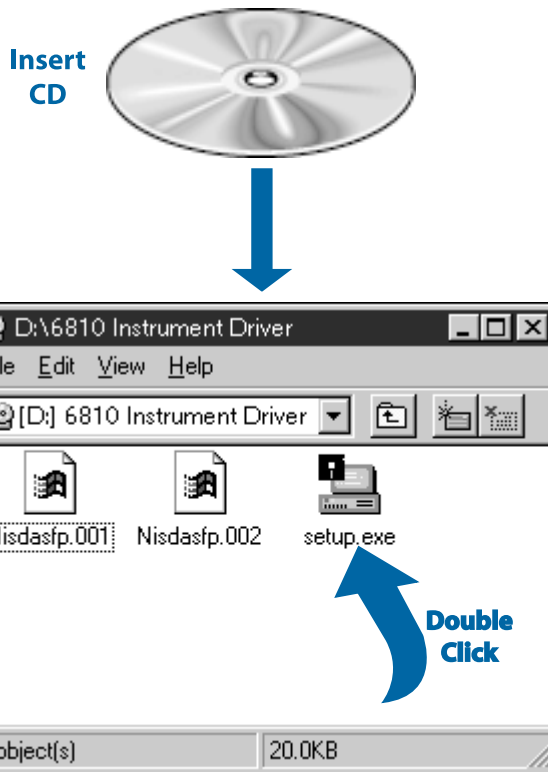


Setup and Test the PCI-6810

1 Install Your Software



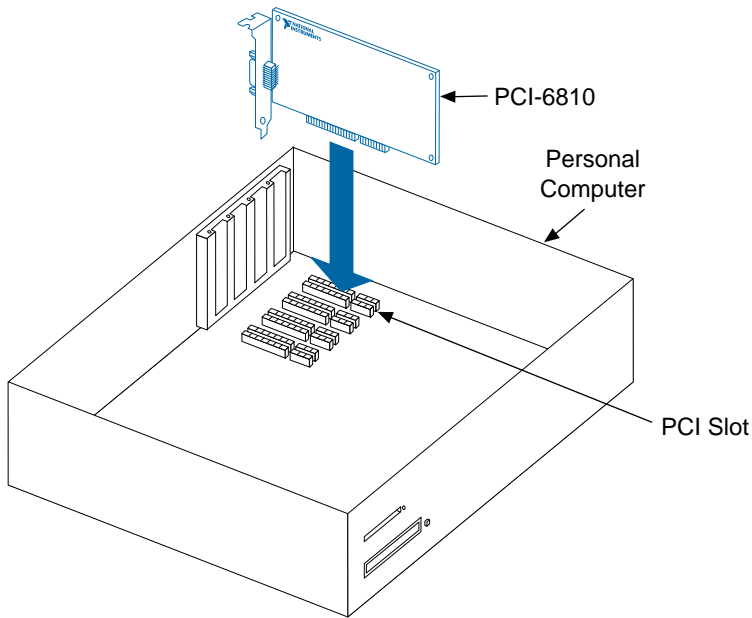
Need more information?
See *Getting Started with Your PCI/PXI-6810 Serial Data Analyzer*.

2 Install Your PCI-6810 Device



Caution

Turn the power off before installing your hardware.



Note

Follow the instructions of your computer documentation to install the PCI-6810 device.

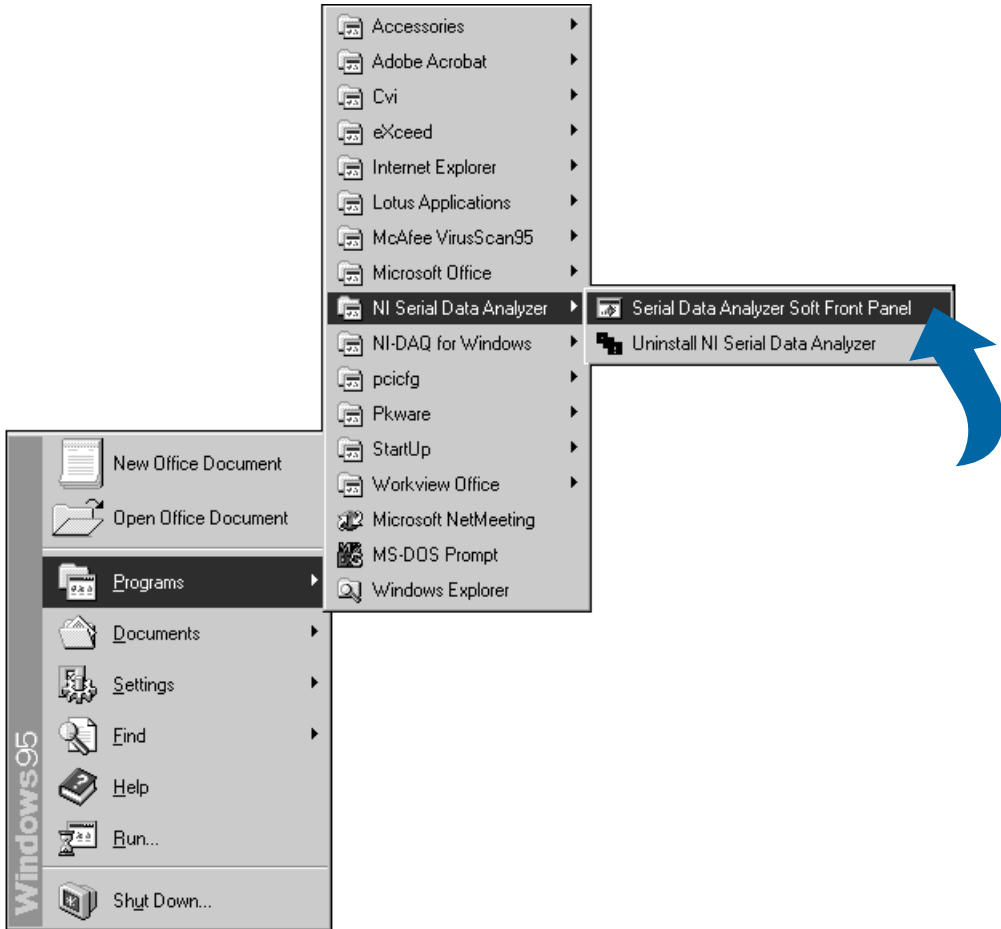


Need more information?

See [Getting Started with Your PCI/PXI-6810 Serial Data Analyzer](#).

3

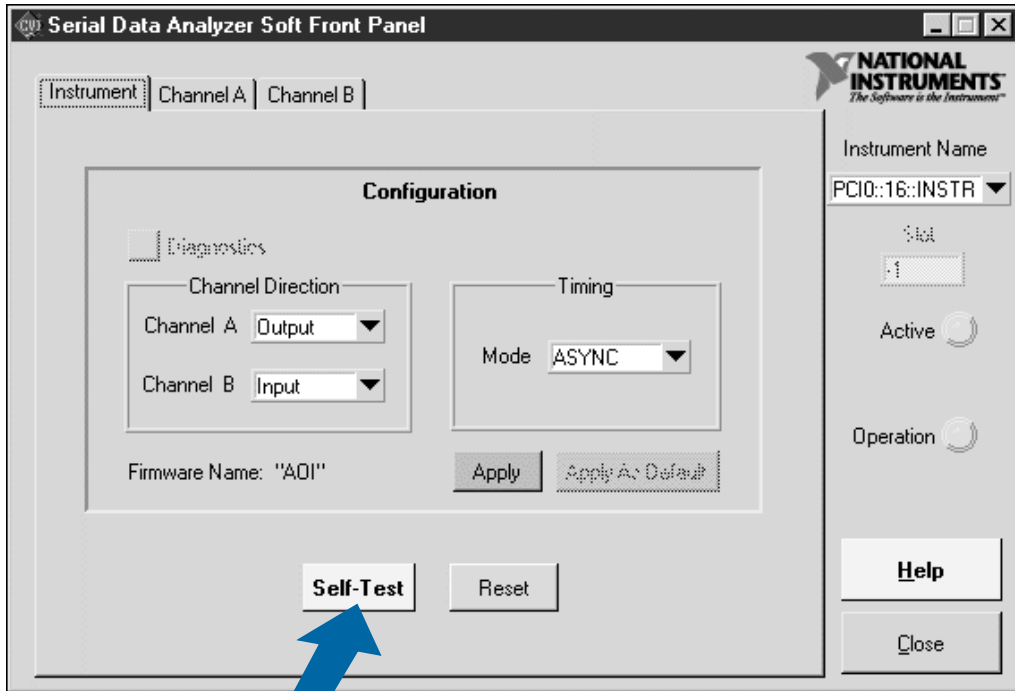
Run the Soft Front Panel



Need more information?

See *Getting Started with Your PCI/PXI-6810 Serial Data Analyzer*.

4 Run the Self-Test



Single
Click



Need more information?

See *Getting Started with Your PCI/PXI-6810 Serial Data Analyzer*.

